



TT1500-M-SR

CAPACITY 1500 kg | 610x1200 mm

The TT1500-M-SR is the ergonomic solution for the safe and efficient moving of Server Racks. The TT1500-M-SR is easy to use and powerful, allowing server racks to be moved by a single operator, even in confined spaces. By using the TT1500-M-SR, the need to move server racks with several people is a thing of the past, as is the physical strain with the associated risk of industrial accidents.

Safety

The TT1500-M-SR features an effective parking brake to hold the truck safely on slopes or on dock levellers. A robust metal cowling protects the drive unit and components, while the low profile chassis protects the operator's feet. A long, low mounted tiller arm places the operator at a safe yet comfortable working distance from the truck. The anti-tilting safety support with automatic ratchet ensure the stability while lifting and driving.

Performance

The TT1500-M-SR has been specially designed for handling server racks without the need to have the rack castor wheels in motion, while handling server racks off and onto a trailer, on dock levellers and industrial flooring. Thanks to its powered traction and lift, the operator's physical input is minimized. Equipped with a 0.7 kW drive motor, the TT1500-M-SR offers a highly cost-effective and productive solution for short and long distance transfer of loads up to 1500 kg. Its compactness guarantees maximum manoeuvrability when operating inside lorries or confined spaces.

Comfort

The compact and exchangeable LiFePo4 batteries allows opportunity charging via the external charger at any convenient power point for optimum uptime. All controls located on the ergonomic tiller head. The dual butterfly levers for traction and the lifting function can be easily operated by either hand to ensure precise operation.

Reliability

The durable drive unit of the TT1500-M-SR delivers consistent high performance and reliability. The robust chassis has a reinforced superstructure for safe, efficient handling of decom-racks up to 1500 kg. The automatic lift stop at maximum lift height improves the quality and durability of components.

Service

The DC drive motor optimizes uptime between routine service periods and reduces service costs, while a reliable, energy efficient controller delivers smooth handling performance.

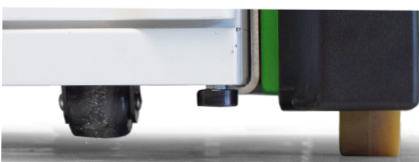
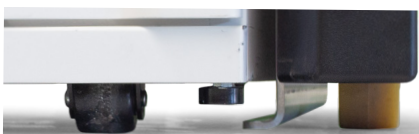
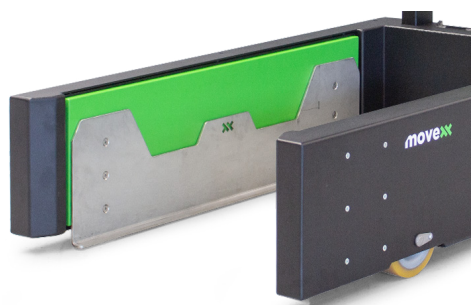
STANDARD EQUIPMENT / OPTIONAL EQUIPMENT

STANDARD

- Drive wheel polyurethane
- Polyurethane load wheels
- 4,5 km/h travel speed
- Electromagnetic brake
- Automatic parking brake
- Body protection switch on tiller head
- LiFePo4 exchangeable battery 24 V / 36 Ah
- Anti-tilting safety support with automatic ratchet
- Emergency button
- Audio signal while driving forward and reverse
- Foot protector
- Superstructure with integrated dual lifting system

OPTIONAL

- Alternative fork lengths and widths
- Extra LiFePo4 exchangeable battery 24 V / 36 Ah



Features

Traction and lift system

- 0,7 kw DC drive motor;
- Adjustable parameters: travel speed up to 4,5 km/h & acceleration;
- Electrical lifting & lowering.

Drive unit

- Robust metal cover protects drive system and components;
- Low chassis skirt protects operator's feet;
- Long, low mounted tiller ensures operator is safe yet comfortable distance from the truck;
- Rugged, reinforced superstructure provides safe handling of loads up to 1500 kg.

Braking system

- Highly efficient electromagnetic brake applied by moving the tiller head fully up position;
- Automatic braking on releasing traction switch or reversing direction;
- Truck slows before coming to a stop, remaining under total control at all times;
- Proofed emergency button on tiller head.

Battery

- Exchangeable battery system ensure an optimal running time;
- LiFePo4 battery technology with integrated Battery Management System;
- Average 8-hours drive time on single charge;
- Less than 4-hours charging.

External charger

- Enables opportunity charging at any convenient power point;
- Easy plug and fast charging;

Controls & Display

- Traction and lift controls grouped on ergonomic tiller head;
- Dual traction switch control levers for use with either hand;
- Body protection switch on tiller head stops truck when actuated;
- Reliable and precise battery indicator.

Superstructure

- With integrated electric lifting system with hold-to-run function.
- Heavy duty polyurethane load wheels;
- The telescopic steel covers serve the purpose of protecting the lift systems and reduced risk of crushing.

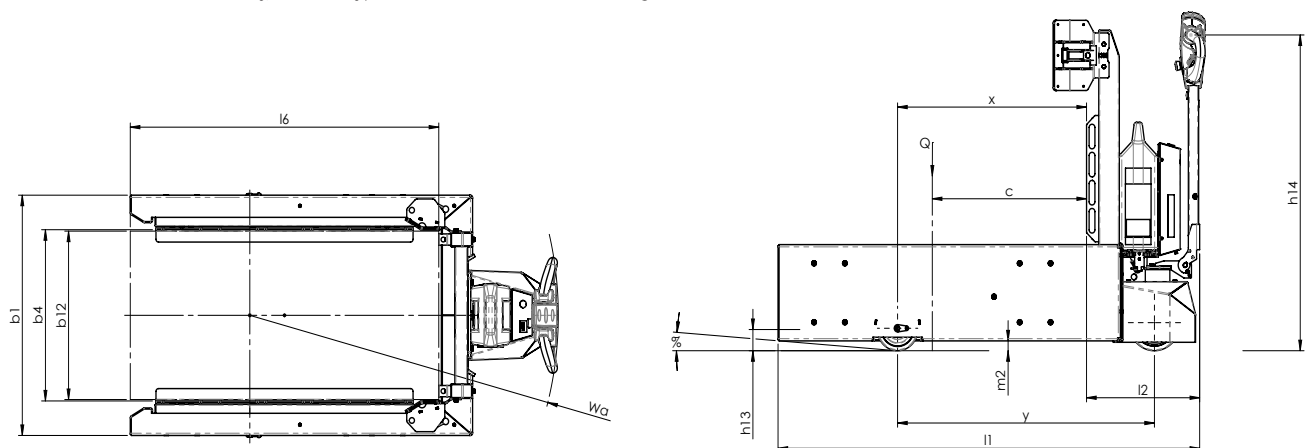
TECHNICAL DATA TT1500-M-SR

According to VDI 2198

Characteristics	1.1	Manufacturer	Movexx International B.V.	
	1.2	Model designation	TT1500-M-SR	
	1.3	Power unit	Electric w. LiFePo4 battery	
	1.4	Operation	Pedestrian	
	1.5*	Load capacity	Q [t]	1.5
	1.7**	Load center	c [mm]	600
	1.9	Axle center	x [mm]	735
Weight	2.1	Service Weight, with battery	[kg]	275
	2.2	Axle load with load, front/rear	[kg]	414/1337
	2.3	Axle load without load, front/rear	[kg]	128/123
Wheels tyres	3.1	Tyres, front/rear R=(rubber), PU=(polyurethane))		PU/PU
	3.2	Tyre size, front	mm	200
	3.3	Tyre size, rear	mm	160
	3.5	Wheels, number front/rear (X=drive)		1X/2
Dimensions	4.9	Height of tiller arm in driving position, min/max	h_{14} [mm]	800/1100
	4.15	Fork height, lowered	h_{13} [mm]	11.5/81.5(70)
	4.19	Overall length	l_1 [mm]	1640
	4.20	Lenght to fork face	l_2 [mm]	440
	4.21	Overall width	b_1 [mm]	868
	4.22	Fork dimensions	s/e/l	308x98x1200
	4.26	Distance between loading surfaces, open/closed	b^4 [mm]	(660-650)/(620-610)
	4.32	Ground clearance, center of wheelbase	m_2 [mm]	35
	4.33	Load dimensions	$b_{12} \times l_6$ [mm]	610x1200
4.35	Turning radius	W_a [mm]	1200	
Performance	5.1	Travelling speed, with/without load	[km/h]	4/4.5 (backwards 2/3.5)
	5.2	Lifting speed, with/without load	[mm/s]	8.6/10.6
	5.8*	Max. gradeability laden/unladen	%	0/7.5
	5.9	Acceleration time with/without load	[s]	12/10
	5.10	Service brake		Electromagnetic
Drive unit	6.1	Drive motor rating S2 60 min	[KW]	0.7
	6.2	Lift motor rating at 20% Max. 4 min./16 min.	[KW]	0.3
	6.3	Battery acc. To DIN 43531		LiFePo4
	6.4	Battery voltage, nominal capacity	[V/Ah]	24/36
	6.5	Battery weight	kg	12,5
	6.6	Energy consumption acc. to VDI cycle	[KW/h]	n/a
Other	8.1	Type of drive control		DC
	10.7	Noise level	[db (A)]	<74

* The maximum payload is affected by the type of slope, operating time and floor type. See the graphic below for an indication of the allowable slope to load ratio (depending on slope surface/wheel type/machine weight).

** The maximum drawbar load on the hook [N] is determined by the engine power of the machine but is affected by the type of wheels of the machine and of the towed trolley/load, the type of surface and the driveable weight of the machine.





movexx
smart electric tugs

Generatorstraat 17-19
3903 LH Veenendaal
The Netherlands

T +31 (0)318 51 99 00
E info@movexx.com
I www.movexx.com

All Images of products shown in this datasheet are indicative only. The actual products may differ from the displayed image. No rights can therefore be derived from the images shown.