



MACHINERY



moveXX
smart electric tugs

ADW MACHINERY is the Retail and Servicing Division of **Admiral World General Trading LLC** Offering a Great Selection and Solutions for Lifting, Pull, and Push Equipment for Diverse Industries in **UAE & GCC**.



Folder options & Parts

2023 v0

TT2500-S

(T2500)



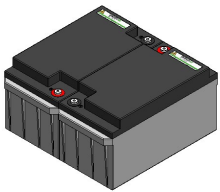
>> move your work easier



Item no. M2098
Engine 600W 100 rpm,
with parking brake



Item no. M4053
Drive controller Curtis
24V, 70/130A



Item no. 333727
Battery AGM 24V-80A set



Item no. M2134
Charger (internal) for AGM
Battery, 24V/10A (+ ext.
Indicator)



Item no. M0318
Battery condition meter,
built-in charger 3 LEDs



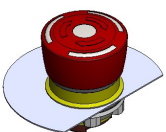
Item no. M3165
Battery indicator LED



Item no. 335814
Wheel set full rubber



Item no. M0121-BBUT
Belly button red



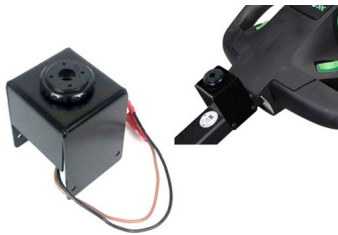
Item no. 335601
Emergency stop



Item no. 337181
Ignition key unequal key
(incl. 3 keys)



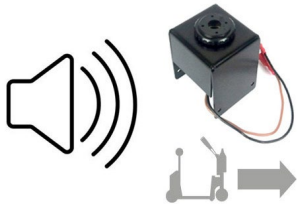
Item no. 337182
Ignition key equal 701
(incl. 3 keys)



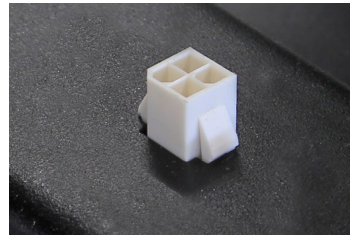
Item no. OPT0057
Horn 90dB



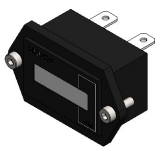
Item no. 337231
Horn 103dB for T2500-
T3500



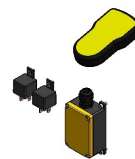
Item no. 335409
Sound signal + horn 90db
(when driving forward)



Item no. 335452
External diagnose
connector



Item no. 335394
Hourmeter



Item no. 337244
Remote set 4-channel 2,4
GHz with Flipper Shut-off
Curtis



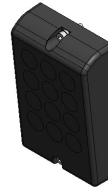
Item no. 335398
Strobelight - while driving



Item no. 336868
Strobelight for T2(3)500



Item no. OPT0058
Antistatic strip



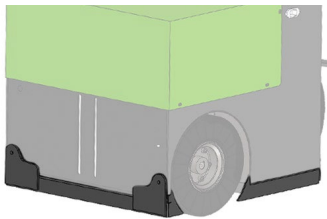
Item no. OPT0068
Code lock



Item no. 335858
Non marking wheel set -
platform



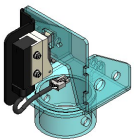
Item no. OPT0079
Safety fender for steering
wheel



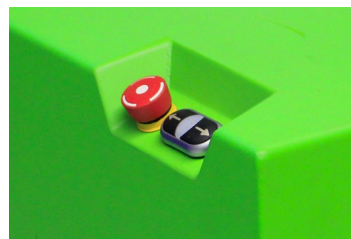
Item no. OPT0078
Bumper bottom T2500



Item no. M3167
Programmer for Curtis



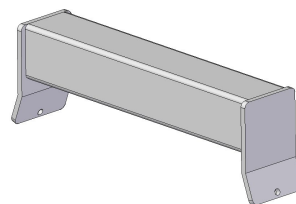
Item no. OPT0153
Switching off T2500-
T3500-T6000 machines



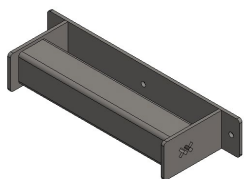
Item no. 336839
Cover with inching



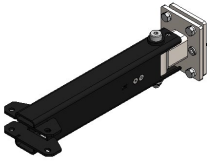
Item no. OPT0088
U-Frame for waste
container 1000 l./1100 l.



Item no. OPT0032
Weld-on part for trolley's
(profile 50 x 50mm)



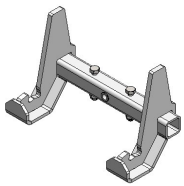
Item no. OPT0033
Bolt-on part for trolley
(profile 50 x 50mm)



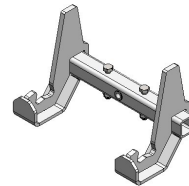
Item no. 337934
Basepart hook 90°



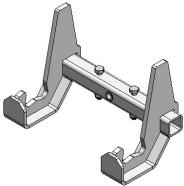
Item no. 336314
Basic hook 90° (manual operation)



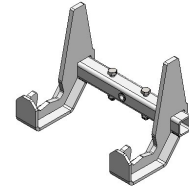
Item no. 338833
Hook for 20 mm profile



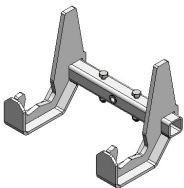
Item no. 338834
Hook for 30 mm profile



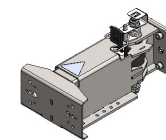
Item no. 338836
Hook for 40 mm profile



Item no. 338837
Hook for 50 mm profile



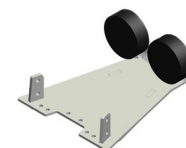
Item no. 338838
Hook for 60 mm profile



Item no. 335491
Electric clamping hook compact (HD) 90°



Item no. 335968
Set 1 - stroke 0-60 mm



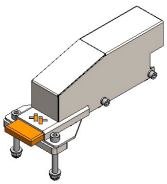
Item no. 335975
Set 2 - stroke 40-100 mm



Item no. OPT0506
Rigid height adjustment -
stroke 100mm - 900N



Item no. 336315
Electric spring height
adjustment - stroke 100
mm 200N



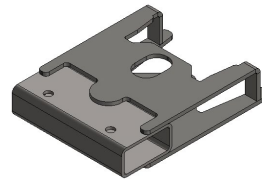
Item no. 338416
Locking modul



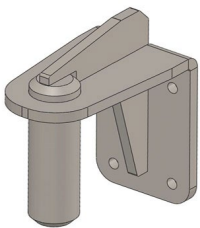
Item no. OPT0472
Adapter for extended
height adjustment hook



Item no. H0083
Hook K-Hartwall dolly
DOS1617/1636 90°



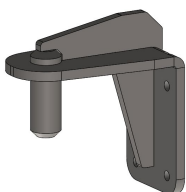
Item no. H0076
Hook for LKE
Platformwagon (Type X)



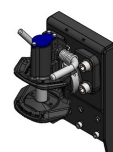
Item no. H0144
Pin for drawbar Ø35



Item no. H0161
Pen for drawbar Ø20, incl.
counterplate



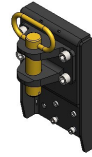
Item no. H0166
Pen for drawbar Ø25, incl.
Counterplate



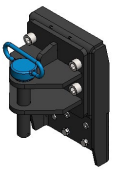
Item no. H0062
Trailer coupling with
frame, pen Ø25



Item no. H0068
Hitchball coupling Ø 50,
incl. adapter



Item no. H0146
Trailer coupling, pen Ø32



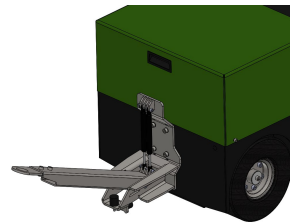
Item no. H0149
Trailer coupling, pen Ø25



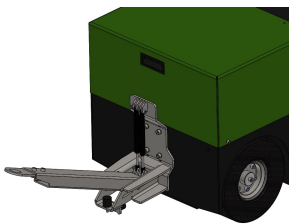
Item no. H0128-D20
Folding Hook Ø20



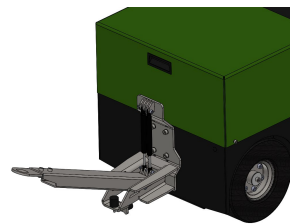
Item no. H0128-D25
Folding hook Ø25



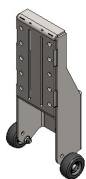
Item no. H0128-D27
Folding hook Ø27



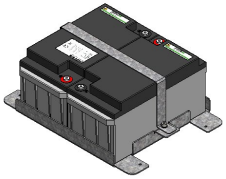
Item no. H0128-D32
Folding hook Ø32



Item no. H0128-D35
Folding hook Ø35



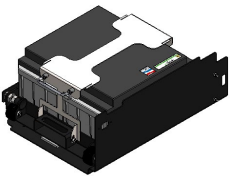
Item no. OPT0447
Adapter rockinger
coupling



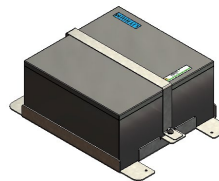
Item no. 333198
Fixed AGM battery pack
24V 80Ah



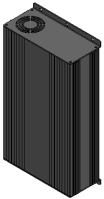
Item no. M2134
Charger (internal) for AGM
Battery, 24V/10A (+ ext.
Indicator)



Item no. 335995
AGM machine preparation
with shaped plate



Item no. 337305
Fixed Lithium battery
25.6V 120Ah



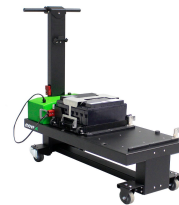
Item no. 337106
Battery charger 25,6V-20A
Lithium with external
indicator



Item no. 335996
LITHIUM machine
preparation with shaped
plate battery included



Item no. 335982
AGM charging station roll-
on/off normal charging
20A



Item no. 335983
LITHIUM Charging Station
roll-on/off normal charging
20A



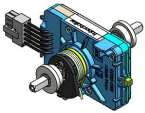
Item no. 335984
LITHIUM Charging Station
roll-on/off fast charge 40A



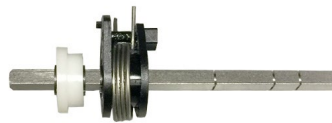
Item no. M2098-SP
Motor 600 Watt 100RPM
Brake 6911413X



Item no. M4053-SP
Rijregeling Curtis 1226-
2201 70/130A SP



Item no. M0121-FLIPPER
Acc. switch tillerhead excl.
buttons



Item no. M0121-4
Spring + shaft throttle



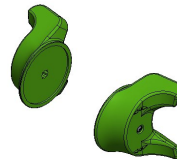
Item no. M0121-BBUT
Belly button red



Item no. M2503
Tiller head support



Item no. M0121-AANUIT-
GROEN
Switch ON/OFF tiller
head, green



Item no. M0121-KNOP-
GROEN
Control knob tiller head
set 2pcs green



Item no. M0121-SPEED-
GROEN
Switch FAST/SLOW tiller
head green



Item no. M0121-UPDOWN-
GROEN
Switch UP/DOWN tiller
head, green



Item no. M0121-BODEM
Bottom cover Tillerhead
(Temo 200)



Item no. M0121-2
Topcover Tillerhead
(Temo 200 with holes for
Emergency, open/close)



Item no. M3165
Battery indicator LED



Item no. 336923
Cable set T2500/T3500
Curtis



Item no. M1037
Carbon brush (4pcs.)
engine 420-800W



Item no. 335701
Set drive wheels full
rubber Ø 250x80mm



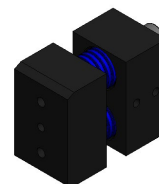
Item no. M6019
Steering wheel solid
rubber black, Ø250 x
80mm



Item no. M0158-STEKKER
Chassis cable charger



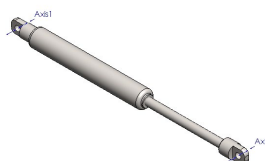
Item no. M0460
Connector M12 4-polig
male



Item no. 336261
Spring system - 2 springs
- heavy



Item no. M0139-1-SP
Actuator controller set (TR-EM 208)



Item no. 338136
Gas spring 90mm 500N
L:255mm



Item no. M0159
Power cord earthed C13
1,8m EU



Item no. 338931
Cover with side protection

MACHINERY

ADW MACHINERY is the Retail and Servicing Division of **Admiral World General Trading LLC** Offering a Great Selection and Solutions for Lifting, Pull, and Push Equipment for Diverse Industries in **UAE & GCC**.

OUR BRANDS

move
driven by brain power



OUR ADDRESS:

ADMIRAL WORLD GENERAL TRADING LLC P.O BOX 112661 STR.8
SHOWROOM 46, AL QUOZ 1, DUBAI, UNITED ARAB EMIRATES

T: +971 4 295 2131

email: machinery@admiralworld.com | www.adwmachinery.com

 follow us
adwmachinery

+971 55 692 5873