

# MACHINERY

**ADW MACHINERY** is the Retail and Servicing Division of **Admiral World General Trading LLC** Offering a Great Selection and Solutions for Lifting, Pull, and Push Equipment for Diverse Industries in **UAE & GCC**.



2022 v2



OPTIONS & PARTS

Movexx

# TT2500-S-Cleanroom

## Standard parts



Motor 600W / 100rpm  
with brake  
**Item number M2098**

## Standard parts



Set Drive wheels,  
Cleanroom  
full rubber, non-marking  
Gray Ø 250 x 80 mm  
**Item number 333664**



Italsea drive controller  
in 24V / 36 bat,  
in 30A / Imax 120A  
**Item number M2128**



Belly button RED  
**Item number M0121-BBUT**



Set Batteries AGM-VRLA  
24V / 80Ah  
**Item number 333727**

## Options



Charger (internal) for  
AGM Battery, 24V / 10A  
+ external indicator  
**Item number M2134**



Horn 90dB, INOX  
**Item number OPT0414**



LED battery indicator  
(build-in)  
**Item number M0318**



Horn 103dB  
**Item number 335396**

## Options



Emergency stop complete  
**Item number 335601**

## Options



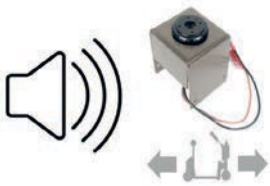
Code lock  
**Item number OPT0068**



Hour tracker  
**Item number 335394**



Programmer for Italsea  
**Item number D0003**



Audio signal + Horn 90 dB  
(while driving)  
**Item number 340755**

## Adapters



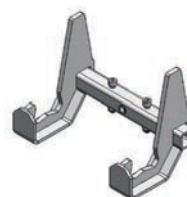
Strobe light, INOX  
(only while driving)  
**Item no. OPT0415**



Base part hook 90°, INOX  
**Item number 337940**

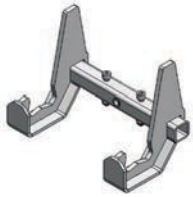


Antistatic strip  
**Item number OPT0058**

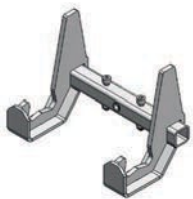


Hook for 20 mm profile  
**Item number 340248**

## Adapters



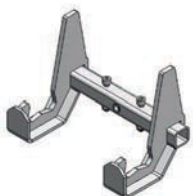
Hook for 30 mm profile  
**Item number 340253**



Hook for 40 mm profile  
**Item number 340257**



Hook for 50 mm profile  
**Item number 340261**

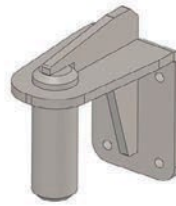


Hook for 60 mm profile  
**Item number 340265**



Electric height adjustment,  
INOX  
**Item nr OPT0050-RVS**

## Adapters



Pen for drawbar Ø35  
**Item number H0144**



Folding hook Ø25  
**Item number H0128-D25**



Folding hook Ø27  
**Item number H0128-D27**



Folding hook Ø32  
**Item number H0128-D32**

€ 443,—



Folding hook Ø35  
**Item number H0128-D35**

## Batteries & Chargers



Battery AGM-VRLA  
24V / 80Ah  
**Item number 333198**



Charger (internal)  
AGM battery 24V / 10A  
+ external indicator  
**Item number M2134**

## Most common spareparts



Switch tiller head  
excl. buttons  
**Item number M0121-FLIPPER**



Feather/shaft Throttle  
**Item number M0121-4**

## Most common spareparts



Belly button RED  
**Item number M0121-BBUT**



Switch ON/OFF  
tiller head green  
**Item number M0121-AANUIT-GROEN**



Switch buttons (2x) green  
**Item number M0121-KNOP-GROEN**



Spring system  
2 springs / heavy  
**Item number 336261**

## Most common spareparts



Italsea drive controller  
in 24V / 36 bat,  
in 30A / Imax 120A  
**Item number M2128-SP**



Chassis cable charger  
**Item no M0158-Stekker**



Carbon brushes (set of 4)  
for Motor 600W  
**Item number M1037**



Set Drive wheels,  
Cleanroom  
full rubber, non-marking  
Gray Ø 250 x 80 mm  
**Item number 333664**



LED battery indicator  
(build-in)  
**Item number M0318**



Castor wheel  
Gray Ø 125 mm  
**Item number M0120**



Cable harness 2  
**Item number M1132**

# MACHINERY

**ADW MACHINERY** is the Retail and Servicing Division of **Admiral World General Trading LLC** Offering a Great Selection and Solutions for Lifting, Pull, and Push Equipment for Diverse Industries in **UAE & GCC**.

## OUR BRANDS

**move**  
driven by brain power



## OUR ADDRESS:

ADMIRAL WORLD GENERAL TRADING LLC P.O BOX 112661 STR.8  
SHOWROOM 46, AL QUOZ 1, DUBAI, UNITED ARAB EMIRATES

T: +971 4 295 2131

email: [machinery@admiralworld.com](mailto:machinery@admiralworld.com) | [www.adwmachinery.com](http://www.adwmachinery.com)

 follow us  
**adwmachinery**

+971 55 692 5873