



MACHINERY



moveXX
smart electric tugs

ADW MACHINERY is the Retail and Servicing Division of **Admiral World General Trading LLC** Offering a Great Selection and Solutions for Lifting, Pull, and Push Equipment for Diverse Industries in **UAE & GCC**.



Folder options & Parts

2023 v0

TT2500-L

(T2500-P)



>> move your work easier



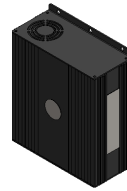
Item no. M2098
Engine 600W 100 rpm,
with parking brake



Item no. M2128
Controller Italsea
7CH4Q107



Item no. OPT0106
Battery Lithium LiFePO4
25,6/36Ah



Item no. OPT0013
Charger (external) for
Lithium Battery, 25,6/10A



Item no. M0123
Battery condition meter 3
LEDs



Item no. M0340
Drive wheel Ø200 B50
d20 mm



Item no. M0110
Swivel castor Ø125 mm
(200 KG)



Item no. M0121-BBUT
Belly button red



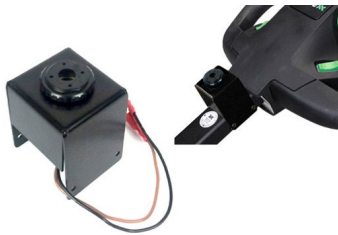
Item no. M0686
Ball T2500-P, L =120mm



Item no. OPT0145
Ignition key (unequal)



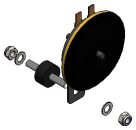
Item no. OPT0146
Ignition key (equal key 701)



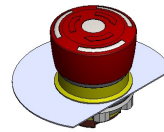
Item no. OPT0057
Horn 90dB



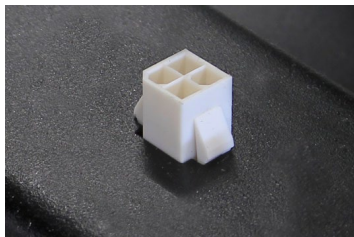
Item no. OPT0253
Audio signal while driving



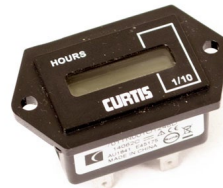
Item no. OPT0059
Horn 103 dB



Item no. 335601
Emergency stop



Item no. OPT0270
Diagnostic connector



Item no. OPT0056
Hour tracker



Item no. OPT0065
Strobelight



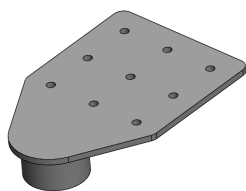
Item no. OPT0058
Antistatic strip



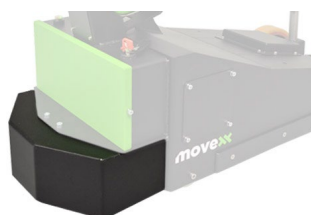
Item no. OPT0068
Code lock



Item no. M3167
Programmer for Curtis



Item no. OPT0301
Screw tube for T1000-P +
T2500-P



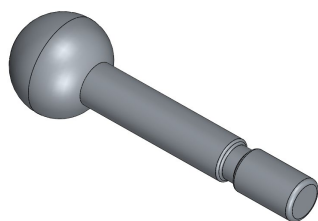
Item no. OPT0212
Safety fender castor
T1000-P



Item no. 340246
Set grooved traction
wheels Ø200x50mm



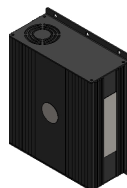
Item no. M3816
Ball T2500-P, L =170mm



Item no. H5261
Ball T2500-P, L +30mm
Ø45



Item no. OPT0106
Battery Lithium LiFePO4
25,6/36Ah



Item no. OPT0013
Charger (external) for
Lithium Battery, 25,6/10A



Item no. OPT0023
Wall mounted lithium
charger (incl. Li charger
25,6V/10A)



Item no. OPT0029
Charging station lithium
(incl. Li chargers
25,6V/10A)



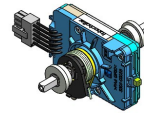
Item no. M2098-SP
Motor 600 Watt 100RPM
Brake 6911413X



Item no. M2128-SP
Spare part controller
Italsea 7CH4Q107



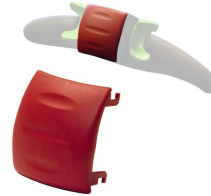
Item no. M1122-SP
Spare part controller
Italsea 7CH4Q45C



Item no. M0121-FLIPPER
Acc. switch tillerhead excl.
buttons



Item no. M0121-4
Spring + shaft throttle



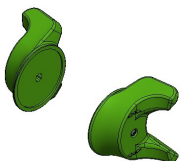
Item no. M0121-BBUT
Belly button red



Item no. M0001
Locking Pin M16x1,5mm



Item no. M0121-UPDOWN-
GROEN
Switch UP/DOWN tiller
head, green



Item no. M0121-KNOP-
GROEN
Control knob tiller head
set 2pcs green



Item no. M0121-AANUIT-
GROEN
Switch ON/OFF tiller
head, green



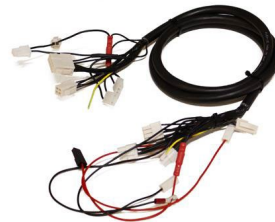
Item no. M0121-SPEED-GROEN
Switch FAST/SLOW tiller head green



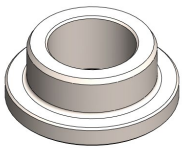
Item no. M1002-0100
Tillerhead support steel



Item no. M3165
Battery indicator LED



Item no. M1127-M050
Cable harness complete



Item no. M4038
Filling can for casting - stainless steel



Item no. M1037
Carbon brush (4pcs.) engine 420-800W



Item no. M0340
Drive wheel Ø200 B50 d20 mm



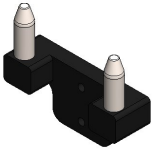
Item no. M0307
Cargo Castor 70mm white nylon WITH COVER



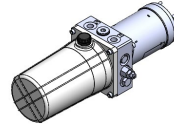
Item no. M0110
Swivel castor Ø125 mm (200 KG)



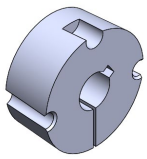
Item no. M0105
Battery connector SB50 50A grey



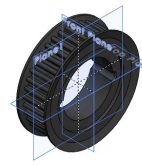
Item no. 339032
Battery guide module,
SB50 connector



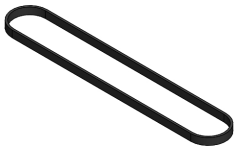
Item no. M0271-SP
Hydrauliek



Item no. M0345
Taperlock chuck 18mm



Item no. M0344
Timing gear taperlock ON
MOTO SHAFT



Item no. M0476
Timing belt Optibelt
Omega 1360 8M



Item no. M0346
Timing gears for bearings
(EDIT ON DRIVE
WHEEL)



Item no. M0517
Sensor inductive 8mm
PNP M12

MACHINERY

ADW MACHINERY is the Retail and Servicing Division of **Admiral World General Trading LLC** Offering a Great Selection and Solutions for Lifting, Pull, and Push Equipment for Diverse Industries in **UAE & GCC**.

OUR BRANDS

move
driven by brain power



OUR ADDRESS:

ADMIRAL WORLD GENERAL TRADING LLC P.O BOX 112661 STR.8
SHOWROOM 46, AL QUOZ 1, DUBAI, UNITED ARAB EMIRATES

T: +971 4 295 2131

email: machinery@admiralworld.com | www.adwmachinery.com

 follow us
adwmachinery

+971 55 692 5873