



MACHINERY



moveXX
smart electric tugs

ADW MACHINERY is the Retail and Servicing Division of **Admiral World General Trading LLC** Offering a Great Selection and Solutions for Lifting, Pull, and Push Equipment for Diverse Industries in **UAE & GCC**.



Folder options & Parts

2023 v0

TT1500-T

(T1500)



>> move your work easier



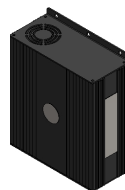
Item no. M2098
Engine 600W 100 rpm,
with parking brake



Item no. M3162
Drive controller Curtis
24V, 50/110A



Item no. 335474
Battery Lithium LiFePO4
25,6/20Ah green



Item no. OPT0013
Charger (external) for
Lithium Battery, 25,6/10A



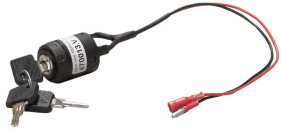
Item no. M3165
Battery indicator LED



Item no. 335701
Set drive wheels full
rubber Ø 250x80mm



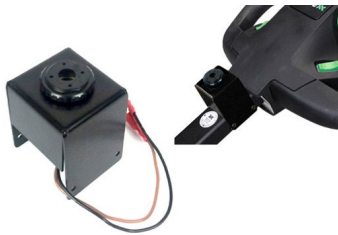
Item no. M0121-BBUT
Belly button red



Item no. 337181
Ignition key unequal key
(incl. 3 keys)



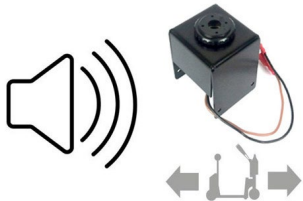
Item no. 337182
Ignition key equal 701
(incl. 3 keys)



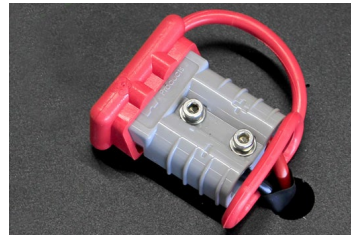
Item no. OPT0057
Horn 90dB



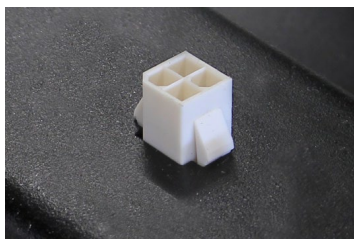
Item no. 335396
Horn 103 dB



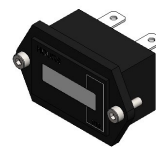
Item no. 335449
Sound signal + horn 90db
(while driving)



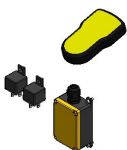
Item no. OPT0001
Extra plug to recharge the
battery



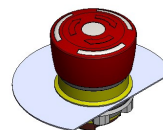
Item no. 335452
External diagnose
connector



Item no. 335394
Hourmeter



Item no. 335643
Remote control 4-channel,
2.4 GHz with flipper switch
-Curtis



Item no. 335601
Emergency stop



Item no. 335398
Strobelight - while driving



Item no. OPT0058
Antistatic strip



Item no. OPT0068
Code lock



Item no. 335572
Set drive wheel full rubber
non marking Ø 250x80mm



Item no. 335573
Set drive wheels foam
filled Ø 250x80mm



Item no. 335574
Set drive wheel foam filled
non marking Ø 250x80mm



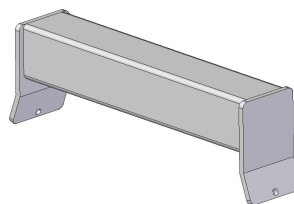
Item no. M3167
Programmer for Curtis



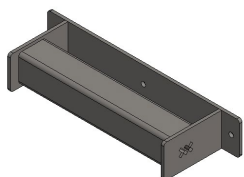
Item no. OPT0482
Snap hooks incl. storage
bracket



Item no. OPT0375
Frame for 770L. and 240L.
bins



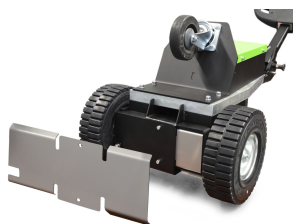
Item no. OPT0032
Weld-on part for trolley's
(profile 50 x 50mm)



Item no. OPT0033
Bolt-on part for trolley
(profile 50 x 50mm)



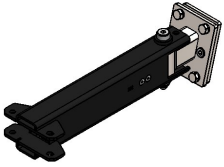
Item no. 340107
T1500 Tilting assistant -
10° Bottom freedom



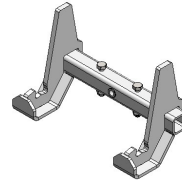
Item no. OPT0497
Protective cover for motor
T1500



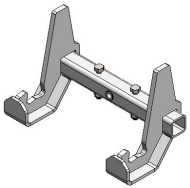
Item no. 335315
T1500 Fixed castor plate -
Machine 15°



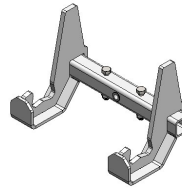
Item no. 337932
Basepart hook 105°



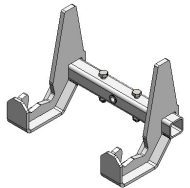
Item no. 338833
Hook for 20 mm profile



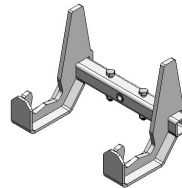
Item no. 338834
Hook for 30 mm profile



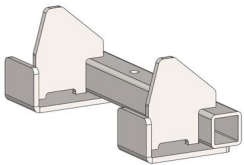
Item no. 338836
Hook for 40 mm profile



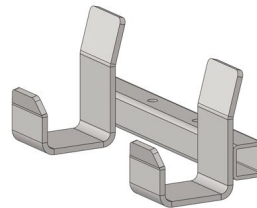
Item no. 338837
Hook for 50 mm profile



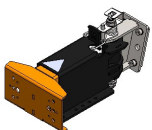
Item no. 338838
Hook for 60 mm profile



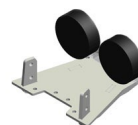
Item no. H0090
Front hook for Hatchery
trolley (EMKA
HD245.10.35.0.50)



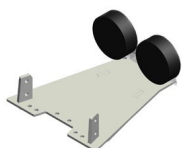
Item no. H0092
HB245.60.30.0 hook for
FEIL plastic roll container



Item no. 335482
Electric clamping hook
compact (HD) 105°



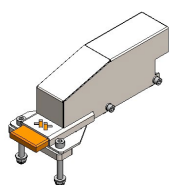
Item no. 335968
Set 1 - stroke 0-60 mm



Item no. 335975
Set 2 - stroke 40-100 mm



Item no. OPT0506
Rigid height adjustment -
stroke 100mm - 900N



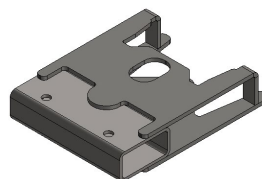
Item no. 338416
Locking modul



Item no. OPT0472
Adapter for extended
height adjustment hook



Item no. H0086
Hook K-Hartwall dolly
(DOS1617/1636, 25°)



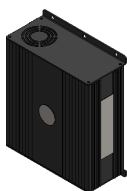
Item no. H0076
Hook for LKE
Platformwagon (Type X)



Item no. 335474
Battery Lithium LiFePO4
25,6/20Ah green



Item no. OPT0106
Battery Lithium LiFePO4
25,6/36Ah



Item no. OPT0013
Charger (external) for
Lithium Battery, 25,6/10A



Item no. OPT0023
Wall mounted lithium
charger (incl. Li charger
25,6V/10A)



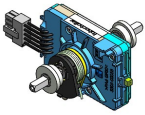
Item no. OPT0029
Charging station lithium
(incl. Li chargers
25,6V/10A)



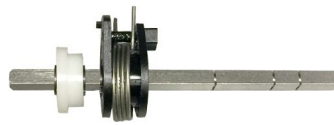
Item no. M2098-SP
Motor 600 Watt 100RPM
Brake 6911413X



Item no. M3162-SP
Rijregeling Curtis 1212S-2601 50/110A SP



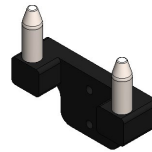
Item no. M0121-FLIPPER
Acc. switch tillerhead excl. buttons



Item no. M0121-4
Spring + shaft throttle



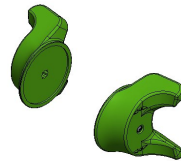
Item no. M0001
Locking Pin M16x1,5mm



Item no. 339032
Battery guide module, SB50 connector



Item no. M0105
Battery connector SB50 50A grey



Item no. M0121-KNOP-GROEN
Control knob tiller head set 2pcs green



Item no. M0121-SPEED-GROEN
Switch FAST/SLOW tiller head green



Item no. M0121-AANUIT-GROEN
Switch ON/OFF tiller head, green



Item no. M0121-UPDOWN-GROEN
Switch UP/DOWN tiller head, green



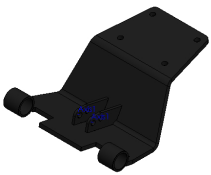
Item no. M0121-BBUT
Belly button red



Item no. M0121-BODEM
Bottom cover Tillerhead (Temo 200)



Item no. M0121-2
Topcover Tillerhead (Temo 200 with holes for Emergency, open/close)



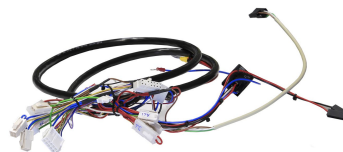
Item no. 335263-SP
Suspension plate + silent blocks



Item no. 335830
Tiller head support T1500



Item no. M3165
Battery indicator LED



Item no. 335406
Cable harness - Universal Curtis



Item no. M3628
Flange bushing PFTE 10x18 LG=7



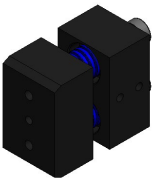
Item no. M1037
Carbon brush (4pcs.) engine 420-800W



Item no. 335701
Set drive wheels full
rubber Ø 250x80mm



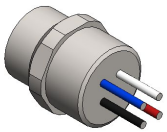
Item no. M4041
Swivel castor Ø125 >54<
240KG



Item no. 333817
Spring system - 2 springs
- Light



Item no. M0460
Connector M12 4-polig
male



Item no. M0459
Chassis 4-wire female



Item no. M0139-1-SP
Actuator controller set (TR
-EM 208)



Item no. OPT0263
Protection cover elec.
connection

MACHINERY

ADW MACHINERY is the Retail and Servicing Division of **Admiral World General Trading LLC** Offering a Great Selection and Solutions for Lifting, Pull, and Push Equipment for Diverse Industries in **UAE & GCC**.

OUR BRANDS

move
driven by brain power



OUR ADDRESS:

ADMIRAL WORLD GENERAL TRADING LLC P.O BOX 112661 STR.8
SHOWROOM 46, AL QUOZ 1, DUBAI, UNITED ARAB EMIRATES

T: +971 4 295 2131

email: machinery@admiralworld.com | www.adwmachinery.com

 follow us
adwmachinery

+971 55 692 5873