



MACHINERY



moveXX
smart electric tugs

ADW MACHINERY is the Retail and Servicing Division of **Admiral World General Trading LLC** Offering a Great Selection and Solutions for Lifting, Pull, and Push Equipment for Diverse Industries in **UAE & GCC**.



Folder options & Parts

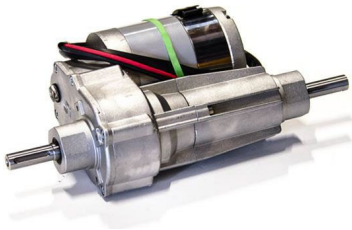
2023 v0

TT1000-T-Inox

(T1000 Inox)



>> move your work easier



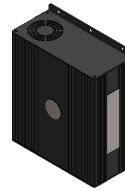
Item no. M1032
Engine 300W 100 rpm,
without parking brake



Item no. M1122
Drive controller Italsea
7CH4Q45C



Item no. 335474
Battery Lithium LiFePO4
25,6/20Ah green



Item no. OPT0013
Charger (external) for
Lithium Battery, 25,6/10A



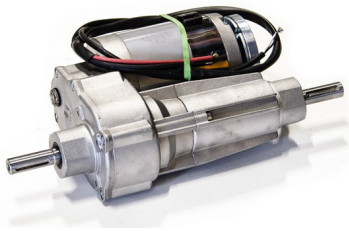
Item no. M0123
Battery condition meter 3
LEDs



Item no. 333664
Drive wheels non-marking
(full-rubber) set of 2



Item no. M0121-BBUT
Belly button red



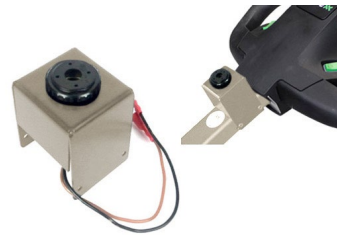
Item no. M1033
Engine 300W / 100 rpm,
with brake



Item no. OPT0145
Ignition key (unequal)



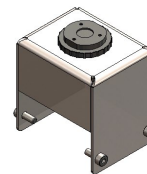
Item no. OPT0146
Ignition key (equal key
701)



Item no. OPT0414
Horn 90dB (stainless
steel)



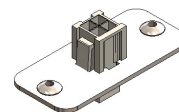
Item no. OPT0059
Horn 103 dB



Item no. 340755
Audio signal while driving
+ Claxon 90dB stainless
steel



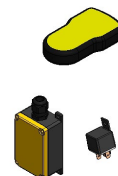
Item no. OPT0001
Extra plug to recharge the
battery



Item no. 335154
Diagnostic connector
INOX



Item no. OPT0056
Hour tracker



Item no. OPT0505
Remote set 4-kanaal 2,4
Ghz



Item no. OPT0063
Emergency stop



Item no. OPT0415
Strobelight tiller head support (stainless steel)



Item no. OPT0058
Antistatic strip



Item no. OPT0068
Code lock



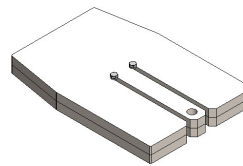
Item no. 335572
Set drive wheel full rubber non marking Ø 250x80mm



Item no. 335574
Set drive wheel foam filled non marking Ø 250x80mm



Item no. D0003
Programmer for Italsea



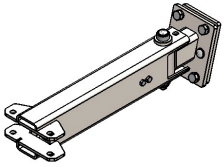
Item no. 341627
Counter weight, 2 plates, 30kg Inox



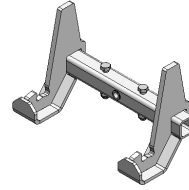
Item no. OPT0482
Snap hooks incl. storage bracket



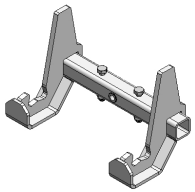
Item no. OPT0465
Protective motor cover



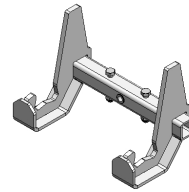
Item no. 337938
Basepart hook 105° Inox



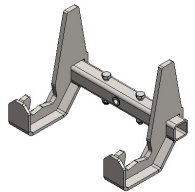
Item no. 340248
Standard hook 20x20xmm
- Profile - Inox



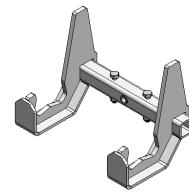
Item no. 340253
Standard hook 30x30xmm
- Profile - Inox



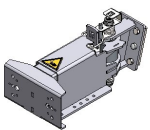
Item no. 340257
Standard hook 40x40xmm
- Profile - Inox



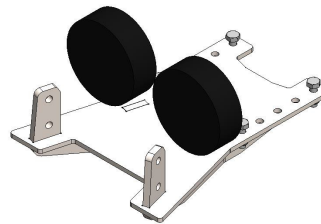
Item no. 340261
Standard hook 50x50xmm
- Profile - Inox



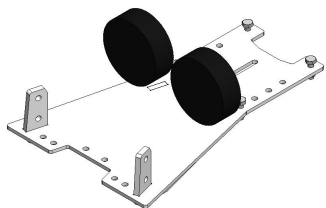
Item no. 340265
Standard hook 60x60xmm
- Profile - Inox



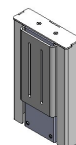
Item no. 339146
Electrical hook compact
105° - Inox



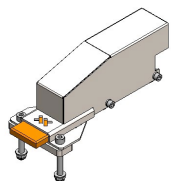
Item no. 341091
Set 1 - range 0-60 mm
Inox



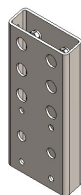
Item no. 341092
Set 2 - range 40-100 mm
Inox



Item no. 341173
Rigid Height Adjustment
Inox - Stroke 100mm



Item no. 338416
Locking modul



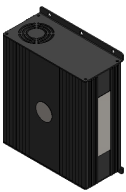
Item no. 334514
Adapter tube for extended
adjustment - stainless
steel



Item no. 335474
Battery Lithium LiFePO4
25,6/20Ah green



Item no. OPT0106
Battery Lithium LiFePO4
25,6/36Ah



Item no. OPT0013
Charger (external) for
Lithium Battery, 25,6/10A



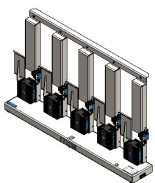
Item no. OPT0023
Wall mounted lithium
charger (incl. Li charger
25,6V/10A)



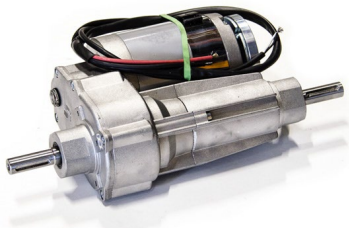
Item no. OPT0023-RVS
Wall mounted Lithium
charger (INOX, incl. Li
charger 25,6V/10A)



Item no. OPT0029
Charging station lithium
(incl. Li chargers
25,6V/10A)



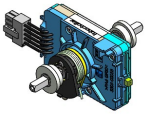
Item no. 337538
Fivefold Inox charging
station Lithium 10Ah



Item no. M1033-SP
Motor 300W 100RPM
REM 6911393E



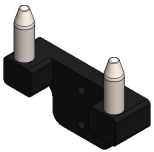
Item no. M1122-SP
Spare part controller
Italsea 7CH4Q45C



Item no. M0121-FLIPPER
Acc. switch tillerhead excl.
buttons



Item no. M0121-4
Spring + shaft throttle



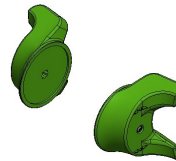
Item no. 339032
Battery guide module,
SB50 connector



Item no. M0105
Battery connector SB50
50A grey



Item no. M0121-BBUT
Belly button red



Item no. M0121-KNOP-
GROEN
Control knob tiller head
set 2pcs green



Item no. M0121-SPEED-
GROEN
Switch FAST/SLOW tiller
head green



Item no. M0121-AANUIT-
GROEN
Switch ON/OFF tiller
head, green



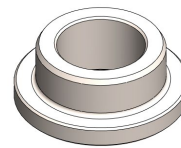
Item no. M0121-UPDOWN-GROEN
Switch UP/DOWN tiller head, green



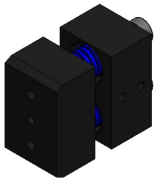
Item no. M0121-BODEM
Bottom cover Tillerhead (Temo 200)



Item no. M0121-2
Topcover Tillerhead (Temo 200 with holes for Emergency, open/close)



Item no. M4038
Filling can for casting - stainless steel



Item no. 333817
Spring system - 2 springs - Light



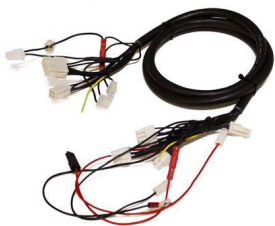
Item no. M0001
Locking Pin M16x1,5mm



Item no. M0186
Carbon brush T1000 engine 300W



Item no. M0123
Battery condition meter 3 LEDs



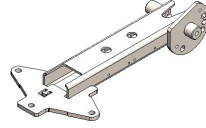
Item no. M1127-M050
Cable harness complete



Item no. 333664
Drive wheels non-marking (full-rubber) set of 2



Item no. M0119
Caster Ø80mm, stainless
steel support



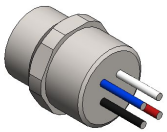
Item no. M6021-0500
Tillerhead supp. T6000-
CLEAN ROOM - M010



Item no. M1305
Castor plate 25gr T1000
RVS



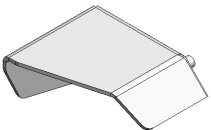
Item no. M0139-1-SP
Actuator controller set (TR
-EM 208)



Item no. M0459
Chassis 4-wire female



Item no. M0460
Connector M12 4-polig
male



Item no. 340708
OPTION, Cover Electric
prep - Inox



MACHINERY

ADW MACHINERY is the Retail and Servicing Division of **Admiral World General Trading LLC** Offering a Great Selection and Solutions for Lifting, Pull, and Push Equipment for Diverse Industries in **UAE & GCC**.

OUR BRANDS

move**xx**
driven by brain power



OUR ADDRESS:

ADMIRAL WORLD GENERAL TRADING LLC P.O BOX 112661 STR.8
SHOWROOM 46, AL QUOZ 1, DUBAI, UNITED ARAB EMIRATES

T: +971 4 295 2131

email: machinery@admiralworld.com | www.adwmachinery.com

 follow us
adwmachinery

+971 55 692 5873