



MACHINERY



moveXX
smart electric tugs

ADW MACHINERY is the Retail and Servicing Division of **Admiral World General Trading LLC** Offering a Great Selection and Solutions for Lifting, Pull, and Push Equipment for Diverse Industries in **UAE & GCC**.



Folder options & Parts

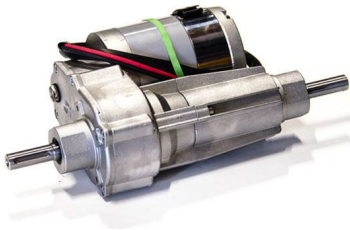
2023 v0

TT1000-L

(T1000-P)



>> move your work easier



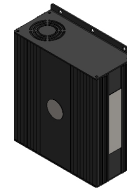
Item no. M1032
Engine 300W 100 rpm,
without parking brake



Item no. M1122
Drive controller Italsea
7CH4Q45C



Item no. 335474
Battery Lithium LiFePO4
25,6/20Ah green



Item no. OPT0013
Charger (external) for
Lithium Battery, 25,6/10A



Item no. M0123
Battery condition meter 3
LEDs



Item no. M0340
Drive wheel Ø200 B50
d20 mm



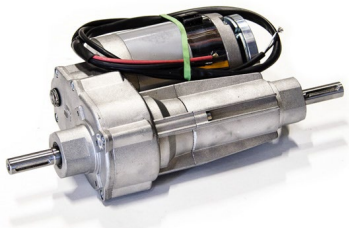
Item no. M0110
Swivel castor Ø125 mm
(200 KG)



Item no. M0121-BBUT
Belly button red



Item no. M0472
Ball T1000-P, L
=116,5mm Ø46,5



Item no. M1033
Engine 300W / 100 rpm,
with brake



Item no. OPT0145
Ignition key (unequal)



Item no. OPT0146
Ignition key (equal key
701)



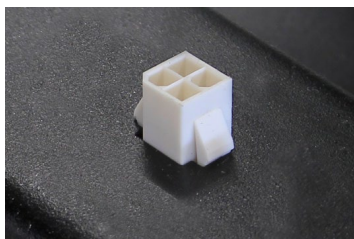
Item no. OPT0057
Horn 90dB



Item no. OPT0059
Horn 103 dB



Item no. OPT0063
Emergency stop



Item no. OPT0270
Diagnostic connector



Item no. OPT0056
Hour tracker



Item no. OPT0065
Strobelight



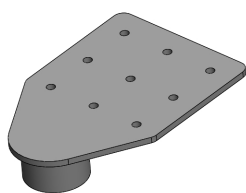
Item no. OPT0058
Antistatic strip



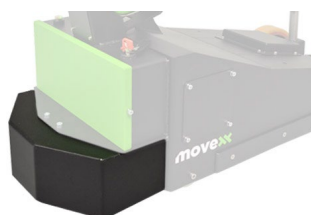
Item no. OPT0068
Code lock



Item no. D0003
Programmer for Italsea



Item no. OPT0301
Screw tube for T1000-P +
T2500-P



Item no. OPT0212
Safety fender castor
T1000-P



Item no. 340246
Set grooved traction
wheels Ø200x50mm



Item no. 337303
Ball coupling T1000-P
standard L=94,5, ø46,5



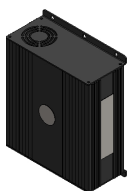
Item no. H5296
Ball T1000-P ø25



Item no. 335474
Battery Lithium LiFePO4
25,6/20Ah green



Item no. OPT0106
Battery Lithium LiFePO4
25,6/36Ah



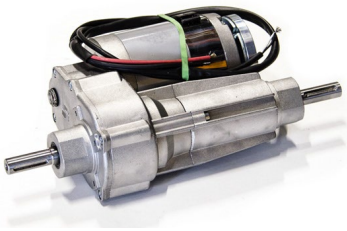
Item no. OPT0013
Charger (external) for
Lithium Battery, 25,6/10A



Item no. OPT0023
Wall mounted lithium
charger (incl. Li charger
25,6V/10A)



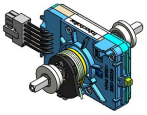
Item no. OPT0029
Charging station lithium
(incl. Li chargers
25,6V/10A)



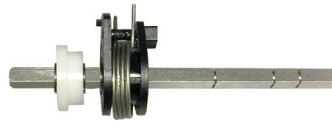
Item no. M1033-SP
Motor 300W 100RPM
REM 6911393E



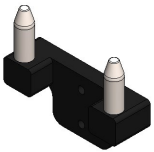
Item no. M1122-SP
Spare part controller
Italsea 7CH4Q45C



Item no. M0121-FLIPPER
Acc. switch tillerhead excl.
buttons



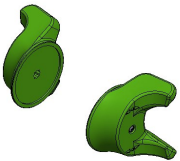
Item no. M0121-4
Spring + shaft throttle



Item no. 339032
Battery guide module,
SB50 connector



Item no. M0105
Battery connector SB50
50A grey



Item no. M0121-KNOP-
GROEN
Control knob tiller head
set 2pcs green



Item no. M0121-BBUT
Belly button red



Item no. M0121-AANUIT-
GROEN
Switch ON/OFF tiller
head, green



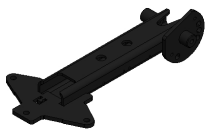
Item no. M0121-SPEED-
GROEN
Switch FAST/SLOW tiller
head green



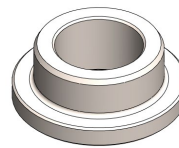
Item no. M0121-UPDOWN-GROEN
Switch UP/DOWN tiller head, green



Item no. M0121-2
Topcover Tillerhead (Temo 200 with holes for Emergency, open/close)



Item no. M1002-0100
Tillerhead support steel



Item no. M4038
Filling can for casting - stainless steel



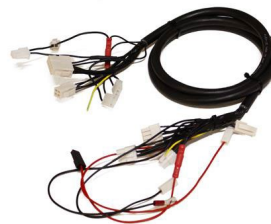
Item no. M0001
Locking Pin M16x1,5mm



Item no. M0186
Carbon brush T1000 engine 300W



Item no. M0123
Battery condition meter 3 LEDs



Item no. M1127-M050
Cable harness complete



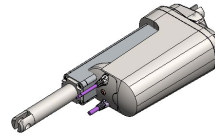
Item no. M0340
Drive wheel Ø200 B50 d20 mm



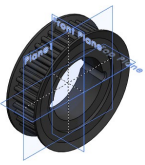
Item no. M0307
Cargo Castor 70mm white nylon WITH COVER



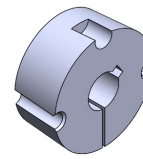
Item no. M0110
Swivel castor Ø125 mm
(200 KG)



Item no. M1151-1



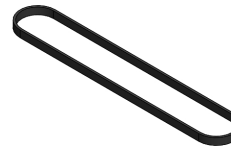
Item no. M0344
Timing gear taperlock ON
MOTO SHAFT



Item no. M0345
Taperlock chuck 18mm



Item no. M0346
Timing gears for bearings
(EDIT ON DRIVE
WHEEL)



Item no. M0476
Timing belt Optibelt
Omega 1360 8M



MACHINERY

ADW MACHINERY is the Retail and Servicing Division of **Admiral World General Trading LLC** Offering a Great Selection and Solutions for Lifting, Pull, and Push Equipment for Diverse Industries in **UAE & GCC**.

OUR BRANDS

move**xx**
driven by brain power



OUR ADDRESS:

ADMIRAL WORLD GENERAL TRADING LLC P.O BOX 112661 STR.8
SHOWROOM 46, AL QUOZ 1, DUBAI, UNITED ARAB EMIRATES

T: +971 4 295 2131

email: machinery@admiralworld.com | www.adwmachinery.com

 follow us
adwmachinery

+971 55 692 5873