



MACHINERY



moveXX
smart electric tugs

ADW MACHINERY is the Retail and Servicing Division of **Admiral World General Trading LLC** Offering a Great Selection and Solutions for Lifting, Pull, and Push Equipment for Diverse Industries in **UAE & GCC**.



Folder options & Parts

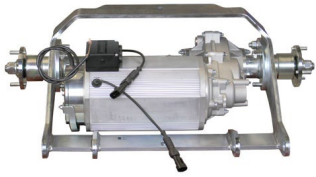
2023 v0

RR3500-S

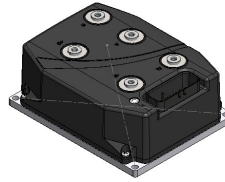
(T3500-Platform)



>> move your work easier



Item no. M3835
AC engine TX1 Plus,
1700W 1:32 20Nm, with
parking brake



Item no. M3932
Drive controller Curtis
24V, 125/250A



Item no. M2911
Battery Lithium LiFePO4
25.6V-120Ah



Item no. M3650
Charger 25,6V-20A lithium



Item no. M3928
Battery condition meter 10
digit LCD Curtis



Item no. M3836
Drive wheel Ø300x90mm



Item no. M3950
Steering wheel
Ø300x90mm



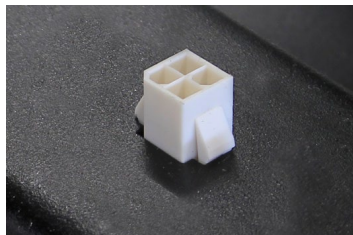
Item no. OPT0145
Ignition key (unequal)



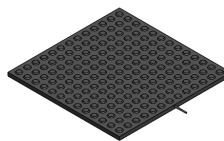
Item no. OPT0059
Horn 103 dB



Item no. 333779
Emergency stop



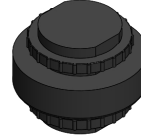
Item no. 335452
External diagnose
connector



Item no. M2961
Detection mat for
PLATFORM machine



Item no. 335854
Ignition lock unevenly pre-assembled with extension cable



Item no. 333815
Audio signal while driving



Item no. 333609
Lighting set - complete



Item no. 334340
Lighting set - front & rear



Item no. OPT0058
Antistatic strip



Item no. OPT0068
Code lock



Item no. M3167
Programmer for Curtis



Item no. 334449
10" Tablet holder



Item no. 334568
Cupholder



Item no. 334447
Scanner holder



Item no. OPT0490
Storage system T3500-
Platform



Item no. OPT0512
Inching function for T3500-
Platform



Item no. 333805
7-pin plug for T2(3)500-
Platforms



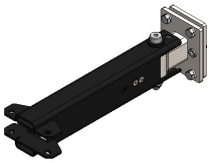
Item no. 334017
USB-charger



Item no. OPT0088
U-Frame for waste
container 1000 l./1100 l.



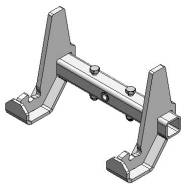
Item no. 334358
Safety set - foam edges



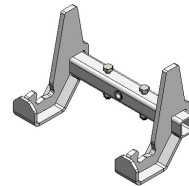
Item no. 337934
Basepart hook 90°



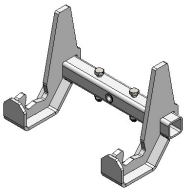
Item no. 336314
Basic hook 90° (manual operation)



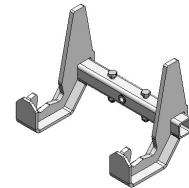
Item no. 338833
Hook for 20 mm profile



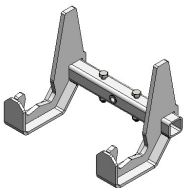
Item no. 338834
Hook for 30 mm profile



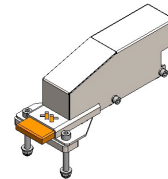
Item no. 338836
Hook for 40 mm profile



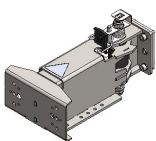
Item no. 338837
Hook for 50 mm profile



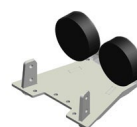
Item no. 338838
Hook for 60 mm profile



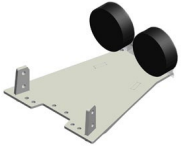
Item no. 338416
Locking modul



Item no. 335491
Electric clamping hook compact (HD) 90°



Item no. 335968
Set 1 - stroke 0-60 mm



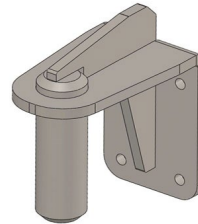
Item no. 335975
Set 2 - stroke 40-100 mm



Item no. OPT0506
Rigid height adjustment -
stroke 100mm - 900N



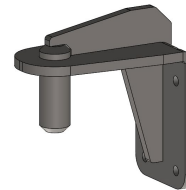
Item no. 336315
Electric spring height
adjustment - stroke 100
mm 200N



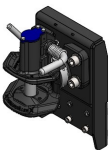
Item no. H0144
Pin for drawbar Ø35



Item no. H0161
Pen for drawbar Ø20, incl.
counterplate



Item no. H0166
Pen for drawbar Ø25, incl.
Counterplate



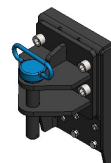
Item no. H0062
Trailer coupling with
frame, pen Ø25



Item no. H0068
Hitchball coupling Ø 50,
incl. adapter



Item no. H0146
Trailer coupling, pen Ø32



Item no. H0149
Trailer coupling, pen Ø25



Item no. M2911
Battery Lithium LiFePO4
25.6V-120Ah



Item no. 335994
Lithium machine
preparation including
battery 25,6V-120Ah



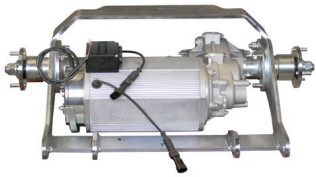
Item no. M3650
Charger 25,6V-20A lithium



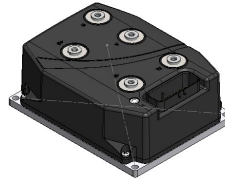
Item no. 335989
Lithium charging station
roll-on/off normal charging
20A



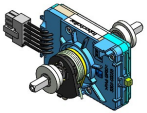
Item no. 335990
Lithium charging station
roll-on/off fast charge 40A



Item no. M3835
AC engine TX1 Plus,
1700W 1:32 20Nm, with
parking brake



Item no. M3932
Drive controller Curtis
24V, 125/250A



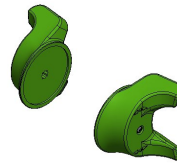
Item no. M0121-FLIPPER
Acc. switch tillerhead excl.
buttons



Item no. M0121-4
Spring + shaft throttle



Item no. M0121-3
Bellybutton Tillerhead
black



Item no. M0121-KNOP-
GROEN
Control knob tiller head
set 2pcs green



Item no. M0121-SPEED-
GROEN
Switch FAST/SLOW tiller
head green



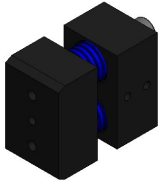
Item no. M0121-UPDOWN-
GROEN
Switch UP/DOWN tiller
head, green



Item no. M0121-2
Topcover Tillerhead
(Temo 200 with holes for
Emergency, open/close)



Item no. M0121-BODEM
Bottom cover Tillerhead
(Temo 200)



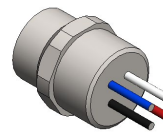
Item no. 336261
Spring system - 2 springs
- heavy



Item no. M3928
Battery condition meter 10
digit LCD Curtis



Item no. M3236
Wiring Harness T3500-
Platform



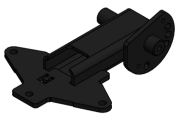
Item no. M0459
Chassis 4-wire female



Item no. M0460
Connector M12 4-polig
male



Item no. M0139-1-SP
Actuator controller set (TR
-EM 208)



Item no. M3927
Tillerhead support



Item no. M3950
Steering wheel
Ø300x90mm



Item no. M3836
Drive wheel Ø300x90mm



MACHINERY

ADW MACHINERY is the Retail and Servicing Division of **Admiral World General Trading LLC** Offering a Great Selection and Solutions for Lifting, Pull, and Push Equipment for Diverse Industries in **UAE & GCC**.

OUR BRANDS



OUR ADDRESS:

ADMIRAL WORLD GENERAL TRADING LLC P.O BOX 112661 STR.8
SHOWROOM 46, AL QUOZ 1, DUBAI, UNITED ARAB EMIRATES

T: +971 4 295 2131

email: machinery@admiralworld.com | www.adwmachinery.com



+971 55 692 5873