

**movexx**  
driven by brain power



**MACHINERY**



**ADW MACHINERY** is the Retail and Servicing Division of **Admiral World General Trading LLC** Offering a Great Selection and Solutions for Lifting, Pull, and Push Equipment for Diverse Industries in **UAE & GCC**.



2022 v1



OPTIONS & PARTS

Movexx

**AA2500-S**

## Standard parts



Motor 750W / 95rpm  
(brushless) with brake  
**Item number M3157**

## Standard parts



Set Drive wheels,  
full rubber  
Black Ø 250 x 80mm  
**Item number 335701**



Curtis drive controller  
(brushless) DC 24V,  
Inom 50A, I<sub>max</sub> 130A  
**Item number M3163**



Wheel Ø 125 x 40mm  
Gray, electrical conductive  
**Item number M2975**



Charger  
Lithium battery 25,6V/20A  
**Item number M3650**



Cable remote with  
emergency stop  
*Forward, backward, left  
right and emergency stop*  
**Item number OPT0104**



Battery Lithium  
25,6V / 120Ah (LiFePO<sub>4</sub>)  
**Item number M2911**



*with 10 individual switchable  
field pairs. Maximal  
range 3m at 220°*  
**Item number M4061**



Charger  
Lithium battery 25,6V/20A  
**Item number M3650**



7" colour display +  
RFID & route module  
*for programming options  
for RDIF-tags & routing*  
**Item no. OPTAGV0001**

## Standard parts



Flashlight+console compl.  
*Console start/stop.*  
*Flashlight: orange, green,  
red and blue*  
**Item no. OPTAGV0014**

## Options



Blue safety spot  
**Item no. OPTAGV0037**



Light vision module  
*Two front white LED's;*  
*two rear red LED's*  
**Item no. OPTAGV0009**



Red safety spot  
**Item no. OPTAGV0052**

## Options



Sound & speech module  
**Item no. OPTAGV0019**



Ignition key 701 (equal)  
**Item no. OPTAGV0011**



Display  
**Item no. OPTAGV0031**



Set Drive wheels  
full rubber, non-marking  
Gray 2x Ø 250 x 80 mm  
**Item no. OPTAGV0010**



Wifi module  
for wireless LAN  
**Item no. OPTAGV0013**

## Options



AGV track straight  
b=160mm l=25m PVC  
**Item no. M2731-0019**

## Options



RFID tag, papercard  
self-adhesive (80x50mm)  
*Radio Frequency ID*  
**Item no. M2803**



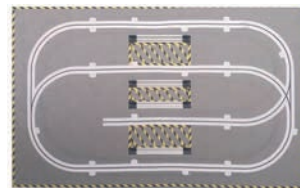
AGV Track corner 45°  
b=160mm r=1m PVC  
**Item no. M2731-0020**



RFID tag, Ø 20 x 2,8 mm  
*Radio Frequency ID*  
**Item no. M0988**



AGV Track corner 90°  
b=160mm r=1m PVC  
**Item no. M2731-0021**



Demo floor, gray (6,5x3 m)  
*Plastic tile floor with  
slow/fast RFID-tags*  
**Item no. OPTAGV0000**



Sticker for creditcard tag  
*Special sticker for sticking,  
protecting & covering TAG's*  
**Item no. M0974-0001**



Positioning rail (2,35m)  
palletcart, for exact posi-  
tioning palletcart over the  
AGV track  
**Item no. OPTAGV0015**



RFID tag 86x54mm 0.8mm  
(creditcard)  
*Radio Frequency ID tag  
to control AGV*  
**Item no. M0974**

## Adapters



Base part hook 90°  
(manual controle)  
**Item number H7090-R010**

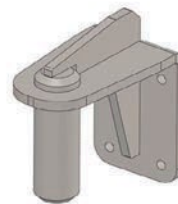
## Adapters



Pen for drawbar Ø16  
**Item number H0064**



Hitch ball Ø 50mm  
(incl. adapter)  
**Item number H0068**



Pen for drawbar Ø35  
**Item number H0144**



Hook for LKE platform-  
wagon (type X)  
**Item number H0076**



Towbar for Movexx  
e-frame  
(suitable for OPT0067)  
**Item number H0070**



Hook K-Hartwall dolly  
(DOS1617/1636, 90°)  
**Item number H0083**



Pen for drawbar Ø15  
**Item number H0071**



Electric disconnecting  
module for hook (AGV)  
*Stroke: 100 mm, for auto-  
matic undocking of the  
trolley*  
**Item no. OPTAGV0003**



Pen for drawbar Ø10  
**Item number H0072**

## Adapters



Folding hook Ø16  
**Item number H0128-D16**



Folding hook Ø20  
**Item number H0128-D20**



Folding hook Ø25  
**Item number H0128-D25**



Folding hook Ø27  
**Item number H0128-D27**



Folding hook Ø32  
**Item number H0128-D32**

## Adapters



Folding hook Ø35  
**Item number H0128-D35**



Hook (quick connection)  
AGV semi-automatic  
**Item number H5123**



Hook  
load detection sensor AGV  
**Item no. OPTAGV0007**

## Batteries & Chargers



Battery Lithium  
25,6V / 120Ah (LiFePO4)  
**Item number M2911**

## Batteries & Chargers



Charger  
Lithium battery 25,6V/20A  
**Item number M3650**

## Most common spareparts



Safety scanner cleaning set  
**Item number M0978-6**



Lithium Charging station  
roll-on/off (incl. 1 battery  
pack 25,6V / 120Ah)  
Fast charging 40A  
**Item no. OPTAGV0045**



Curtis drive controller  
(brushless) DC 24V,  
Inom 50A, Imax 130A  
**Item number M3163**

## Most common spareparts



Set Drive wheels,  
full rubber  
Black Ø 250 x 80mm  
**Item number 335701**



Battery guide  
**Item number 339032**



€ 144,—  
Wheel Ø 125 x 40mm  
Gray, electrical conductive  
**Item number M2975**



Battery connector SB50  
**Item number M0105**

© 2022 Movexx International B.V. The images shown are used for illustration purposes only and may differ from the products indicated. No rights can therefore be derived from it. All prices are in euros and exclusive of VAT. Price deviations and printing errors are subject to change. The price list is the confidential product of Movexx International B.V. and no portion of this datasheet may be copied, performed, or redistributed without the express written authority of Movexx International B.V.

# MACHINERY

**ADW MACHINERY** is the Retail and Servicing Division of **Admiral World General Trading LLC** Offering a Great Selection and Solutions for Lifting, Pull, and Push Equipment for Diverse Industries in **UAE & GCC**.

## OUR BRANDS

**move**  
driven by brain power



## OUR ADDRESS:

ADMIRAL WORLD GENERAL TRADING LLC P.O BOX 112661 STR.8  
SHOWROOM 46, AL QUOZ 1, DUBAI, UNITED ARAB EMIRATES

T: +971 4 295 2131

email: [machinery@admiralworld.com](mailto:machinery@admiralworld.com) | [www.adwmachinery.com](http://www.adwmachinery.com)

 follow us  
**adwmachinery**

+971 55 692 5873