

# MACHINERY

**ADW MACHINERY** is the Retail and Servicing Division of **Admiral World General Trading LLC** Offering a Great Selection and Solutions for Lifting, Pull, and Push Equipment for Diverse Industries in **UAE & GCC**.



OPTIONS & PARTS

Movexx

# AA1000-S-Basic

2022 v2



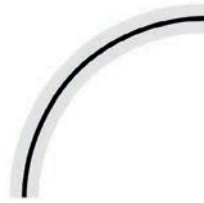


## Options



Ignition key 701 (equal)  
**Item no. OPTAGV0011**

## Options



AGV Track corner 90°  
b=160mm r=1m PVC  
**Item no. M2731-0021**



Set Drive wheels  
full rubber, non-marking  
Gray 2x Ø 250 x 80 mm  
**Item no. OPTAGV0010**



Sticker for creditcard tag  
*Special sticker for sticking,  
protecting & covering TAG's*  
**Item no. M0974-0001**



Flashlight+console compl.  
*Console start/stop.  
Flashlight: orange, green,  
red and blue*  
**Item no. OPTAGV0014**



Metal tag (zendimir),  
creditcard format  
*For the 'stop', 'high speed'  
and 'low speed' function*  
**Item number M2787**

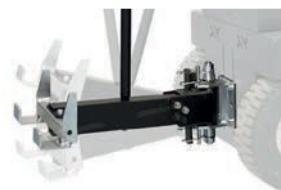


AGV track straight  
b=160mm l=25m PVC  
**Item no. M2731-0019**

## Adapters



AGV Track corner 45°  
b=160mm r=1m PVC  
**Item no. M2731-0020**



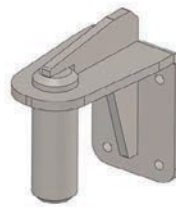
Base part hook 90°  
(manual controle)  
**Item number H7090-R010**

## Adapters



Hitch ball Ø 50mm  
(incl. adapter)  
**Item number H0068**

## Adapters



Pen for drawbar Ø35  
**Item number H0144**



Hook for LKE platform-  
wagon (type X)  
**Item number H0076**



Towbar for Movexx  
e-frame  
(suitable for OPT0067)  
**Item number H0070**



Hook K-Hartwall dolly  
(DOS1617/1636, 90°)  
**Item number H0083**



Pen for drawbar Ø15  
**Item number H0071**



module for hook (AGV)  
*Stroke: 100 mm, for auto-  
matic undocking of the  
trolley*  
**Item no. OPTAGV0003**



Pen for drawbar Ø10  
**Item number H0072**



Pen for drawbar Ø16  
**Item number H0064**



Folding hook Ø16  
**Item number H0128-D16**

## Adapters



Folding hook Ø20  
**Item number H0128-D20**



Folding hook Ø25  
**Item number H0128-D25**



Folding hook Ø27  
**Item number H0128-D27**



Folding hook Ø32  
**Item number H0128-D32**



Folding hook Ø35  
**Item number H0128-D35**

## Adapters



Hook (quick connection)  
AGV semi-automatic  
**Item number H5123**



Hook  
load detection sensor AGV  
**Item no. OPTAGV0007**

## Batteries & Chargers



Battery Lithium green  
(LiFePO4) 25,6V / 20Ah  
**Item number 335474**



Charger (external) for  
Lithium battery, 25,6V / 10A  
**Item number OPT0013**

## Batteries & Chargers



Wall mounted Lithium charger, incl. Lithium charger 25,6V / 20A  
**Item no. OPT0023-20A**



Charging station Lithium (5x), incl. Lithium charger 25,6V / 10A  
**Item number OPT0029**



Wall mounting for charger 25,6V / 10A  
**Item number OPT0261**

## Most common spareparts



Battery guide  
**Item number 339032**

## Most common spareparts



Battery connector SB50  
**Item number M0105**



Safety scanner cleaning set  
**Item number M0978-6**



Curtis drive controller DC 24V,  
Inom 30A, I<sub>max</sub> 50A  
**Item number M3161**



Carbon brushes (set of 4) for Motor 300W  
**Item number M0186**



Set Drive wheels, full rubber  
Black Ø 250 x 80mm  
**Item number 335701**

Most common spareparts

Most common spareparts



Wheel Ø 125 x 40mm  
Gray, electrical conductive  
**Item number M2975**

# MACHINERY

**ADW MACHINERY** is the Retail and Servicing Division of **Admiral World General Trading LLC** Offering a Great Selection and Solutions for Lifting, Pull, and Push Equipment for Diverse Industries in **UAE & GCC**.

## OUR BRANDS

**move**  
driven by brain power



## OUR ADDRESS:

ADMIRAL WORLD GENERAL TRADING LLC P.O BOX 112661 STR.8  
SHOWROOM 46, AL QUOZ 1, DUBAI, UNITED ARAB EMIRATES

T: +971 4 295 2131

email: [machinery@admiralworld.com](mailto:machinery@admiralworld.com) | [www.adwmachinery.com](http://www.adwmachinery.com)

 follow us  
**adwmachinery**

+971 55 692 5873